

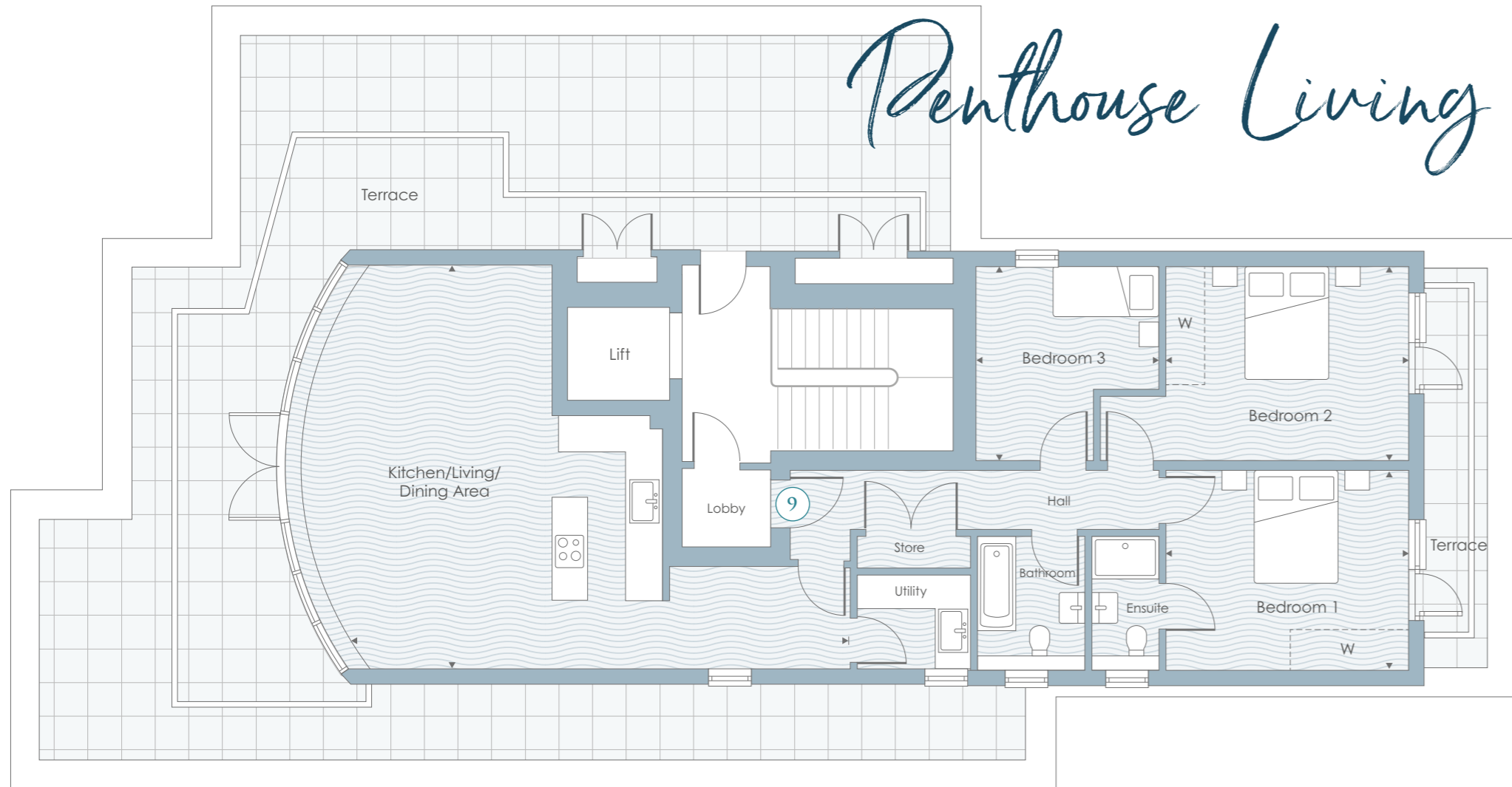


WATERGATE  
*View*  
NEW QUAY

3 BEDROOM LUXURY PENTHOUSE



# Penthouse Living



Our top spec, 3 bedroom penthouse apartment includes a spacious living room/kitchen/dining area with French doors leading out to an extended terrace running around the building. There is also a utility room adjoining this extensive, open plan living space. Two of the bedrooms share a terrace of their own, while Bedroom 1 benefits from an ensuite bathroom. The penthouse is accessible by lift, with a private lobby leading to the hall.

## Penthouse

- KITCHEN/LIVING/DINING AREA**  
7.61m x 5.60m    25'0" x 18'4"
- BEDROOM 1**  
4.43m x 3.64m    14'6" x 11'11"
- BEDROOM 2**  
4.43m x 3.67m    14'6" x 12'0"
- BEDROOM 3**  
3.67m x 3.30m    12'0" x 10'10"





# WATERGATE *View* NEWQUAY

3 BEDROOM PENTHOUSE

WATERGATE VIEW, WATERGATE RD, NEWQUAY TR7 3LX.

Tel: 01637 850850 Email: [sales@dba.estate](mailto:sales@dba.estate)

[www.watergateview.com](http://www.watergateview.com)

Photograph shows local area. Computer generated images not to scale. Finishes and materials may vary and landscaping is illustrative only. Kitchen layouts are indicative only and may change. Interior may include optional upgrades or extras available at an additional cost. Watergate View is preferred marketing name only. To confirm specific details on our homes please ask your Sales Executive.