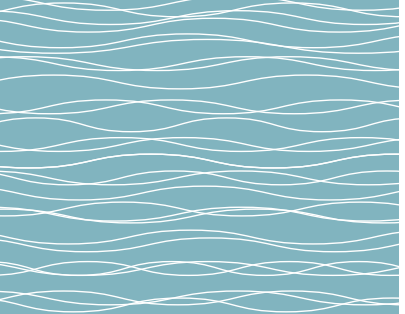




WATERGATE
View
NEWQUAY

2 & 3 BEDROOM APARTMENTS





Apartment 01

KITCHEN/LIVING/DINING AREA

9.05m x 4.46m 29'8" x 14'8"

BEDROOM 1

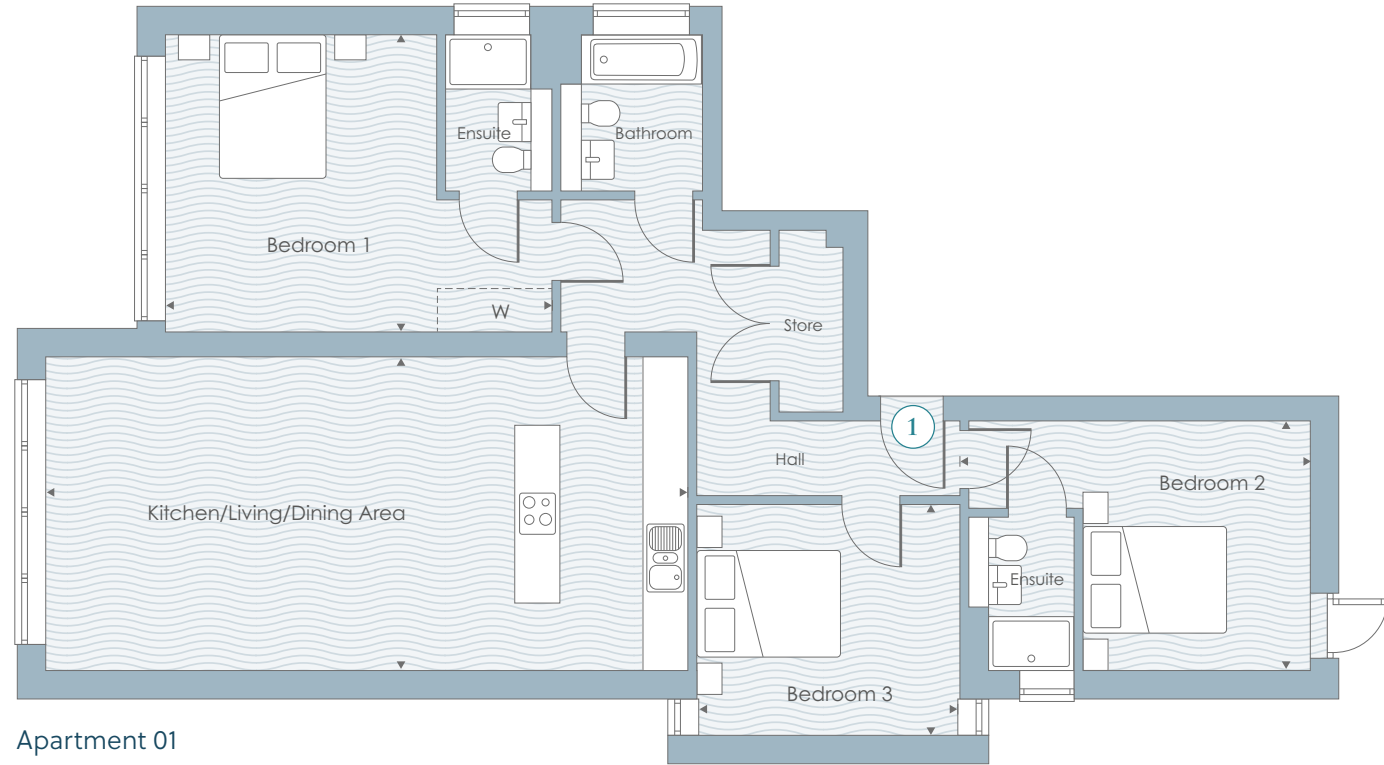
4.11m x 3.87m 13'6" x 12'8"

BEDROOM 2

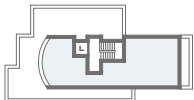
3.60m x 3.23m 11'10" x 10'7"

BEDROOM 3

3.74m x 3.24m 12'3" x 10'8"



Apartment 01



THIRD FLOOR



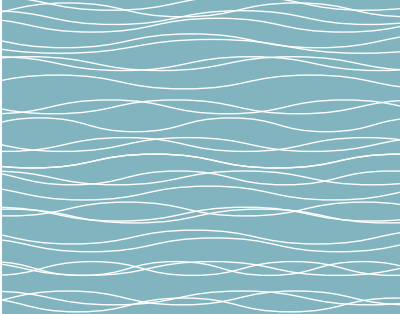
SECOND FLOOR



FIRST FLOOR



GROUND FLOOR

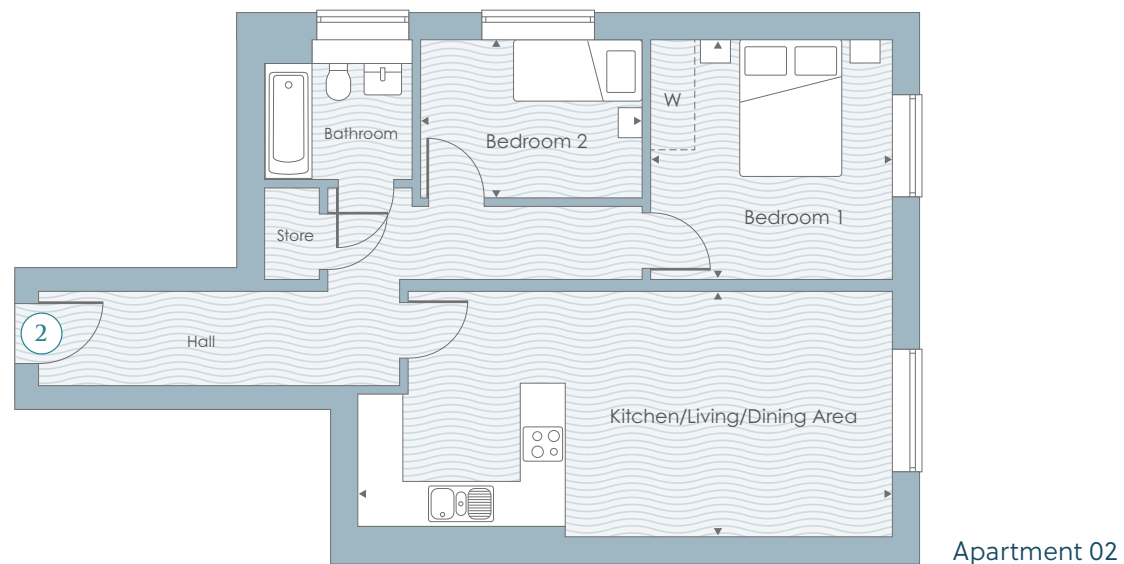


Apartment 02

KITCHEN/LIVING/DINING AREA
7.95m x 3.78m 26'1" x 12'5"

BEDROOM 1
3.03m x 2.93m 9'11" x 9'7"

BEDROOM 2
3.29m x 1.77m 10'10" x 5'10"



Apartment 02

Apartment 03

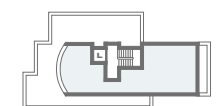
KITCHEN/LIVING/DINING AREA
7.63m x 4.20m 25'0" x 13'9"

BEDROOM 1
3.78m x 3.68m 12'5" x 12'1"

BEDROOM 2
3.78m x 3.50m 12'5" x 11'6"



Apartment 03



THIRD FLOOR



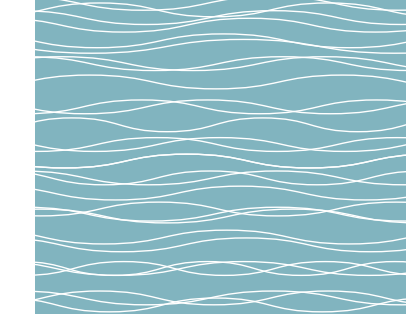
SECOND FLOOR



FIRST FLOOR



GROUND FLOOR

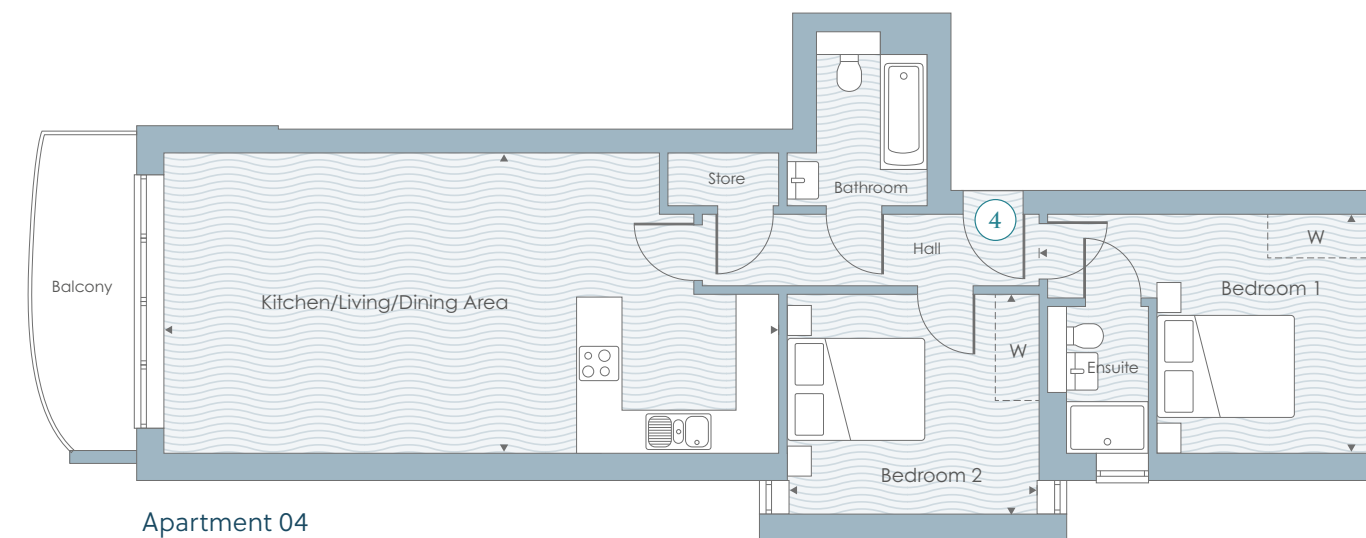


Apartment 04

KITCHEN/LIVING/DINING AREA
7.79m x 4.46m 25'7" x 14'8"

BEDROOM 1
4.85m x 3.50m 15'11" x 11'6"

BEDROOM 2
4.49m x 3.24m 14'9" x 10'8"



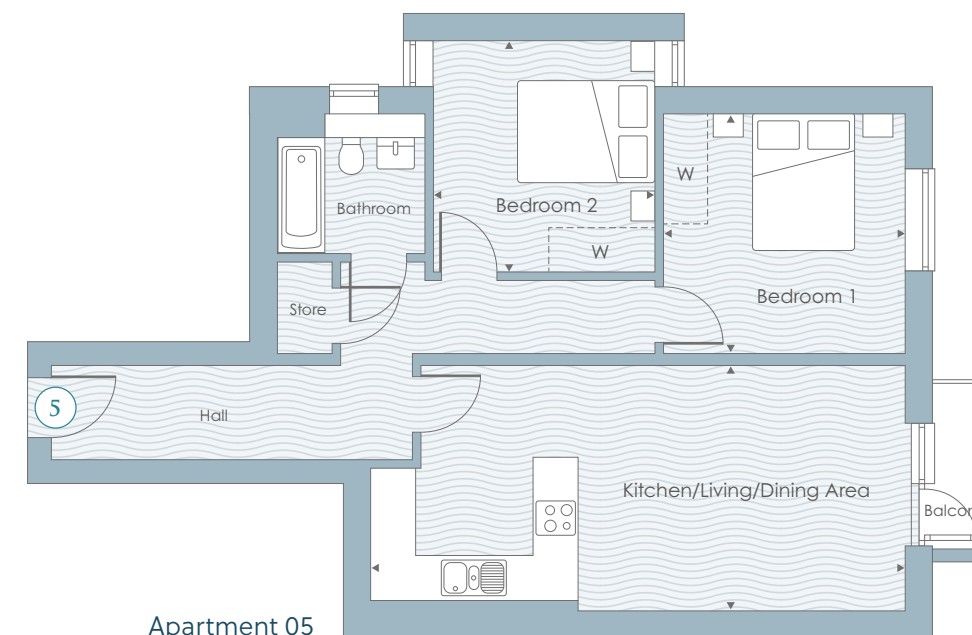
Apartment 04

Apartment 05

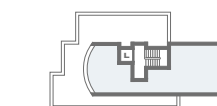
KITCHEN/LIVING/DINING AREA
7.95m x 3.64m 26'1" x 11'11"

BEDROOM 1
3.59m x 3.53m 11'9" x 11'7"

BEDROOM 2
3.29m x 3.40m 10'10" x 11'2"



Apartment 05



THIRD FLOOR



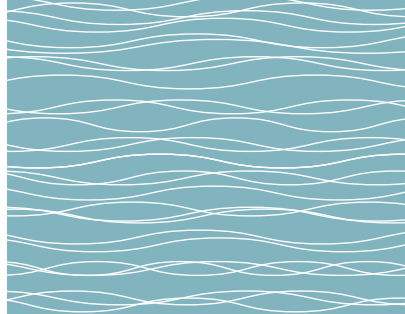
SECOND FLOOR



FIRST FLOOR



GROUND FLOOR



Apartment 06

KITCHEN/LIVING/DINING AREA
7.67m x 4.20m 25'2" x 13'9"

BEDROOM 1
3.94m x 3.78m 12'11" x 12'5"

BEDROOM 2
3.80m x 3.50m 12'6" x 11'6"



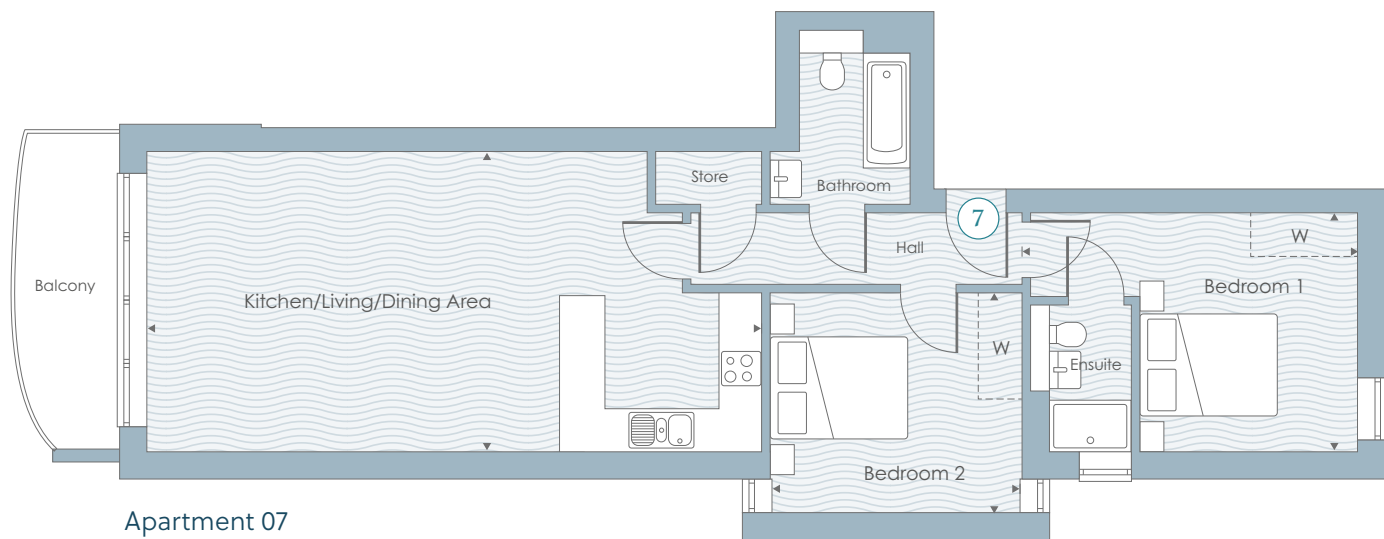
Apartment 06

Apartment 07

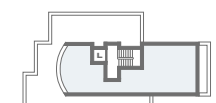
KITCHEN/LIVING/DINING AREA
8.27m x 4.46m 27'2" x 14'8"

BEDROOM 1
4.85m x 3.50m 15'11" x 11'6"

BEDROOM 2
3.74m x 3.24m 12'3" x 10'8"



Apartment 07



THIRD FLOOR



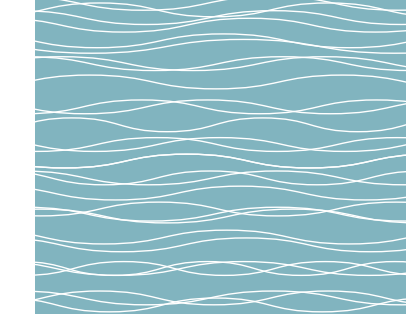
SECOND FLOOR



FIRST FLOOR



GROUND FLOOR

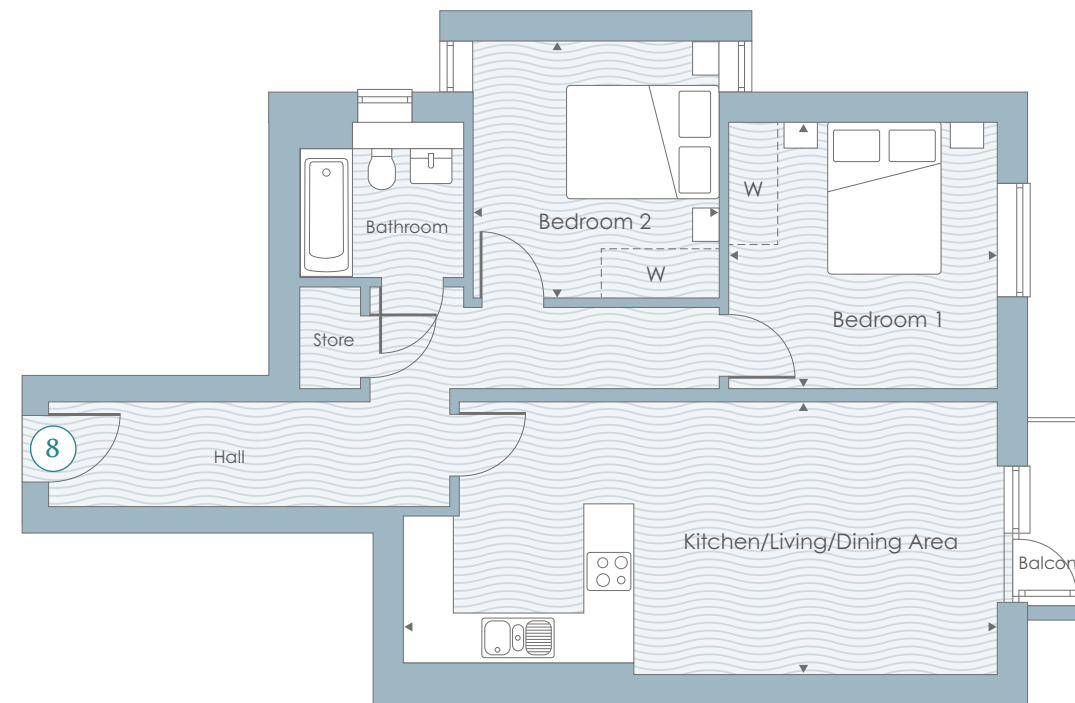


Apartment 08

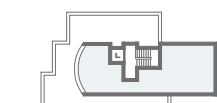
KITCHEN/LIVING/DINING AREA
7.20m x 3.64m 23'7" x 11'11"

BEDROOM 1
3.59m x 3.53m 11'9" x 11'7"

BEDROOM 2
3.43m x 3.30m 11'3" x 10'10"



Apartment 08



THIRD FLOOR



SECOND FLOOR



FIRST FLOOR



GROUND FLOOR



WATERGATE *View* NEWQUAY

2 & 3 BEDROOM APARTMENTS

WATERGATE VIEW, WATERGATE RD, NEWQUAY TR7 3LX.

Tel: 01637 850850 Email: sales@dba.estate

www.watergateview.com

Photograph shows local area. Computer generated images not to scale. Finishes and materials may vary and landscaping is illustrative only. Kitchen layouts are indicative only and may change. Interior may include optional upgrades or extras available at an additional cost. Watergate View is preferred marketing name only. To confirm specific details on our homes please ask your Sales Executive.